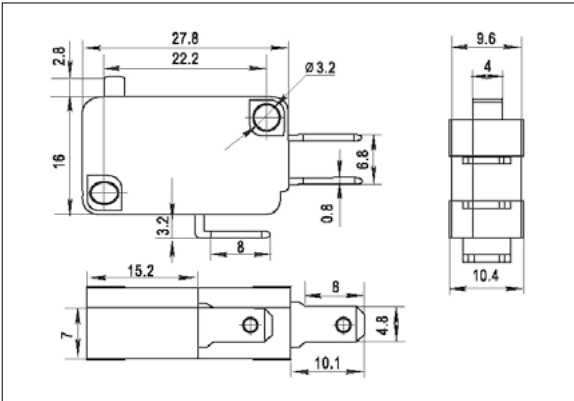




RL-61-F-RE-P6-0-N-21(8)A



21(8)A 250V T85 1E4  
16(4)A 250V T125 1E4  
16(4)A 250V T85 25E3  
16A 125V/250VAC T105

(G) Rating:  
6(4)A 250V T125 5E4  
6A 125V/250VAC T105  
6A 125VAC 1E4

Mechanical life: 1E6 cycles  
In-house test



Please check with our sales department the gold contacts possibilities we produce.



# RL-61

RL-61		D	BK/BK	P8	0	K		
Function		Cap colour / Housing		Terminals	Lever Type		Operating Force	
D	(ON)-OFF 2P	WT	White		0	Not Applicable	14	80 g
E	ON-(OFF) 2P	BK	Black		1	28	15	60 ± 15 gf
F	(ON)-ON 3P	GE	Grey		2	32.8	16	100 ± 20 gf
				3	13.1 23.7	17	150 ± 30 gf	
				4	12	18	250 ± 40 gf	
				5	20	19	300 ± 50 gf	
				6	51	20	400 ± 50 gf	
				7	15	21	500 ± 50 gf	
				8	55	22		
				9	40	23		
				10	28	24		
				11	45	25		
				12	38.5			
				13	22			